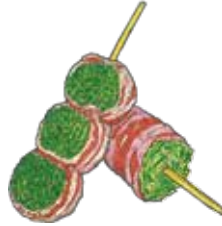


WELCOME TO  
GORYON-SAN



Goryon-san is a **“Hakata Kushiyaki”** and **“Kakurega”** concept Izakaya with current locations in Tokyo, Shibuya, and Roppongi, developed by BASICS Co. Ltd.

Goryon-san Sydney aims to faithfully recreate the feel of a traditional “Hakata Kushiyaki” where our “Kushiyaki” specialists (through the constant smoke rising from the grilling stands) grill up skewers with utmost care.

A “Kakurega” (meaning a place that you can come in and “hide out” ), a low-key izakaya that welcomes both sophisticated adults and trendy millennials alike, where Japanese draft beer is a definite must and a curated selection of sake, wine, and cocktails from a Japanese perspective.

We want to create a space where you can drop by with ease, at times with friends, partners or family.

A unique atmosphere. A true **“Kakurega”** that is **GORYON-SAN.**

## JPN BEER CRAFT BEER

### Suntory Premium Malt's on Tap 12

ABV. 5.5% / 430ml

The Premium Malt's is sold only "KEG" because we believe that "Draft Beer" is the most delicious way to serve.

### Suntory Premium Black on Tap 12

ABV. 5.5% / 430ml

The Premium black is sold only "KEG" because we believe that "Draft Beer" is the most delicious way to serve.

### Asahi Soukai Light 8

ABV. 3.5% / 330ml

Refreshing in Japanese is a low-carb, premium international mid-strength beer.

### Hitachino Nest - White Ale 15

ABV. 5.5% / 330ml

Brewed with wheat malt, and flavored with coriander, Orange peel and nutmeg. Please enjoy the soft and flavorful taste.

### Hitachino Nest - DaiDai IPA 15

ABV. 6% / 330ml

Brewed with fukuremikan orange and special hops.

### Hitachino Nest - Red Rice Ale 16

ABV. 7% / 330ml

Brewed using a red rice from ancient times.

## SHOCHU BY THE GLASS & BOTTLE JPN VODKA

rock, soda, green tea, oolong tea, water (cold or hot)  
soda carafe 350ml: \$3

60ml bottle  
720ml

### Morinokura Shuzo "Utagaki" 15 175

ABV. 25% / Barely - Fukuoka

To enhance the flavour and give a rich mellowness to the body, Utagaki has been matured for over 3 years in purposefully made earthenware jars.

### Toyonaga Shuzo "Yunotsuru" 14 160

ABV. 25% / Rice - Kumamoto

Traditional "Kuma" shochu. It has a crisp earthy character. Yunotsuru has been aged for seven years.

### Kokubu Shuzo "Imo" 13 150

ABV. 25% / Sweet potato - Kagoshima

The first sweet potato koji. Enjoy the gentle sweetness and complex aromas of Kogane sengan.

900ml

### Oishi Shuzo "Tsurumi" 13 180

ABV. 25% / Sweet potato - Kagoshima

Shochu for shochu lovers.

Gentle aroma with gorgeous silky texture.

### Tasaki Distillery "Kuro Tanabata" 13 180

ABV. 25% / Sweet potato - Kagoshima

It is made with black koji which gives it a deep rich earthy character and a gorgeous silky texture. It has been aged, allowing the flavours to settle and mature.

### Harada Shuzo "Shoryu" 14 190

ABV. 25% / Brown sugar - Kagoshima

Shoryu has been aged for 5 years, this care and dedication is to bring out the natural flavours and aromas of the brown sugar.

## UMESHU BY THE GLASS & BOTTLE PLUM WINE

rock, soda, water (cold or hot), soda carafe 350ml: \$3

	<u>60ml</u>	<u>bottle</u> <u>500ml</u>
<b>Toyonagagura</b> <b>“Kumamon Label Rice Shochu Umesu”</b>	<b>12</b>	<b>95</b>

ABV. 12% / Ume apricot with real rice shochu - Kumamoto  
A marzipan - like aroma, rich fruit tang overrules the sweet.

<b>Junmai Umesu “Yamada Jyuro”</b>	<b>13</b>	<b>105</b>
------------------------------------	-----------	------------

ABV. 12% / Ume apricot with premium junmai sake - Kanagawa  
One of the rare umeshu, made with junmai sake  
- excellent Yamadanishiki with a premium quality plum  
which is only found in kanagawa.

<b>Umetsu Junmai Umesu “Nokyo”</b>	<b>14</b>	<b>-</b>
------------------------------------	-----------	----------

ABV. 12% / Ume apricot - Tottori  
Rich powerful ume fruit flavour. Big juicy fruit acidity.  
Amazing warm!

<b>Junmai Umesu “Suiryu”</b>	<b>14</b>	<b>-</b>
------------------------------	-----------	----------

ABV. 10% / Ume apricot with kimoto and honey - Nara  
Beautiful complexity of kimoto with juicy ume and  
dark rich earthy sweetness of honey.

<b>Uzenshiraume</b> <b>Junmai Umesu “Ume-Yusui”</b>	<b>10</b>	<b>125</b>
--	-----------	------------

ABV. 10% / Ume apricot with premium junmai sake - Yamagata  
Very delicate ume flavour, nice mild ume sake.

<b>The Choya Aged 3 Years</b>	<b>19</b>	<b>198</b>
-------------------------------	-----------	------------

ABV. 15% / Ume apricot

<b>The Choya Extra Year</b>	<b>14</b>	<b>139</b>
-----------------------------	-----------	------------

ABV. 17% / Ume apricot

bottle  
720ml

bottle  
700ml

## UMESHU FLIGHT 3 x 30ml

<b>Plum Memories</b>	<b>20</b>
----------------------	-----------

“Nokyo” “Suiryu” “Kumamon Label Rice Shochu Umesu”

## UMESHU COCKTAIL

<b>The Umesu Lemon Sour</b>	<b>16</b>
-----------------------------	-----------

choya umeshu, vodka, soda, lemon slice

<b>The Umesu Beer</b>	<b>15</b>
-----------------------	-----------

choya umeshu, jpn beer

<b>The Umesu Highball</b>	<b>15</b>
---------------------------	-----------

choya umeshu, brandy, soda, lemon slice

<b>The Umesu Hot Tea</b>	<b>15</b>
--------------------------	-----------

choya umeshu, jpn apricot (ume)  
hot tea (green tea, oolong tea, houji-cha)

## FRUITS SAKE BY THE GLASS & BOTTLE

	<u>60ml</u>	<u>bottle</u>
<b>Miwaku no Yuzu</b>	<b>12</b>	<b>95</b>

ABV. 7% / Yuzu citrus

<b>Miwaku no Momo</b>	<b>12</b>	<b>95</b>
-----------------------	-----------	-----------

ABV. 7% / Peach

<b>Miwaku no Mango</b>	<b>12</b>	<b>95</b>
------------------------	-----------	-----------

ABV. 7% / Mango

<b>Miwaku no Mikan</b>	<b>12</b>	<b>95</b>
------------------------	-----------	-----------

ABV. 7% / Mandarin

## Junmai

Pure rice sake. Made with nothing but the elemental building blocks of sake, rice and water. Full flavour with lots of character. This is salt of the earth sake.

		<u>glass</u>	<u>small carafe</u>	<u>large carafe</u>	<u>bottle 1800ml</u>
<b>Nojun Karakuchi 80 “Taka”</b>	Yamaguchi	11	21	40	195
ABV. 15% / A bright fruity aroma, a hint of melon. Rich acid with a light touch, dry finish.					
<b>Koikawa Junmai “Beppin”</b>	Yamagata	10	19	36	165
ABV. 16% / Classic junmai sake. Dry, but balanced with umami. Goes well with many foods. Gold medalist in Japan 2014.					
<b>Suiryu Nigori “Kimoto no Dobu” 28 BY</b>	Nara	14	27	52	248
ABV. 15% / A young feisty kimoto. Very dry nigori (cloudy). Astringency, great with thick creamy texture.					

## Junmai Ginjo

A premium grade of sake. It is made with rice polished to 60% or less. It requires special care and close attention to detail to create delicate aromas and elegant flavours.

		<u>glass</u>	<u>small carafe</u>	<u>large carafe</u>	<u>bottle 1800ml</u>
<b>Tajimagoumei “Chikusen” Omachi 28 BY</b>	Shimane	14	27	52	258
ABV. 15% / Warm rice-malt base flavour with slight astringency around edges leaving a piquant aftertaste.					
<b>Simaoka Shuzo Gunmaizumi “Usumidori”</b>	Gunma	15	29	56	268
ABV. 16.5% / Smooth with hints of peaches & pear leaving lingering aftertaste with just slightly astringent.					
<b>Kinoshita Shuzo “Tamagawa”</b>	Kyoto	14	27	52	258
ABV. 15.5% / A gentle fruity sweetness, is not overdone.					
<b>Shiokawa Shuzo “Cowboy”</b>	Niigata	-	-	-	<u>720ml</u> 98
ABV. 18.5% / Super Dry					

**Junmai Daiginjo**

Super premium grade sake. This is the showpiece of a masters'art. Made with premium grade rice polished to 50% or less. Finely honed skills applied with precision, create a delicate sophistication of flavour. It is lighter, cleaner and more fragrant. This is the apex of sake making.

		<u>glass</u>	<u>small carafe</u>	<u>large carafe</u>	<u>bottle 1800ml</u>
<b>Koikawa Shuzo “Koigaryu”</b>	Yamagata	19	37	73	339
ABV. 15% / Underlying rice aroma with hints of fruity aromatics. Dry and slightly astringent with astringent aftertaste.					
<b>Ota Shuzo “Benten Musume”</b>	Tottori	24	47	93	418
ABV. 13% / Faintly fruity aroma with underlying rice.					
<b>Asahi Shuzo “Kubota Hekijyu”</b>	Niigata	19	37	73	349
ABV. 15% / Sweet and rich					
<b>Taketsuru Shuzo “Taketsuru”</b>	Hiroshima	-	-	-	<u>720ml</u> 398
ABV. 17% / Delicate rice aroma with overtones of cinnamon and pear.					
<b>Asahi Shuzo “Dassai 23”</b>	Yamaguchi	-	-	-	278
ABV. 16% / Sweet and elegant					

**S**AKE FLIGHT

3 x 30ml

**Master of Sake**

20

- “Kimoto no Dobu” Junmai
- “Tamagawa” Junmai Ginjo
- “Benten Musume” Junmai Daiginjo

## WHISKY BY THE GLASS & BOTTLE

neat, rock, soda, coke, water soda carafe 350ml: \$3	<u>30ml</u>	<u>bottle</u>
<b>Suntory “Yamazaki” 12 Years Old</b> ABV. 43% / JPN. Osaka	39	678
<b>Suntory “Yamazaki” Distiller’s Reserve</b> ABV. 43% / JPN. Osaka	19	339
<b>Suntory “Hibiki” Japanese Harmony</b> ABV. 43% / JPN. Osaka	25	429
<b>Suntory “Hakushu” 12 Years Old</b> ABV. 43% / JPN. Yamanashi	39	729
<b>Suntory “Hakushu” Distiller’s Reserve</b> ABV. 43% / JPN. Yamanashi	16	259
<b>Nikka “Coffey Grain”</b> ABV. 45% / JPN. Hokkaido	17	279
<b>Nikka “Taketsuru” Pure Malt</b> ABV. 43% / JPN. Hokkaido	17	279
<b>Starward Wine Cask Single Malt</b> ABV. 41% / AUS	12	-
<b>Maker’s Mark Bourbon Whisky</b> ABV. 40% / USA	10	-

## WHISKY HIGHBALL BY THE HIGHBALL GLASS

whisky 45ml w/ fresh lemon, soda	<u>glass</u>
<b>Suntory Whisky “Kakubin”</b> ABV. 40% / JPN. Osaka	18
<b>Suntory “Yamazaki” 12 Years Old</b> ABV. 43% / JPN. Osaka	49
<b>Suntory “Yamazaki” Distiller’s Reserve</b> ABV. 43% / JPN. Osaka	26
<b>Suntory “Hibiki” Japanese Harmony</b> ABV. 43% / JPN. Osaka	29
<b>Suntory “Hakushu” Distiller’s Reserve</b> ABV. 43% / JPN. Yamanashi	21
<b>Nikka “Coffey Grain”</b> ABV. 45% / JPN. Hokkaido	22
<b>Nikka “Taketsuru” Pure Malt</b> ABV. 43% / JPN. Hokkaido	22
<b>Starward Wine Cask Single Malt</b> ABV. 41% / AUS	18
<b>Maker’s Mark Bourbon Whisky</b> ABV. 40% / USA	12
<b>Jack Daniel’s Tennessee Whisky</b> ABV. 40% / USA	10
<b>Ballantine’s Finest Blended Scotch Whisky</b> ABV. 40% / Scotland	10

## ORIGINAL JPN CHU-HI

---

shochu (jpn vodka) 60ml	glass
<b>Fresh Lemon Chu-Hi</b>	12
w/ freshly squeezed lemon, natural sugar syrup, soda	
<b>Yuzu Hi</b>	12
w/ 100% yuzu & peel juice, natural sugar syrup, soda	
<b>Oolong Hi</b>	10
w/ oolong tea	
<b>Ryoku-Cha Hi</b>	10
w/ green tea	
<b>Calpico Chu-Hi</b>	10
w/ calpico, soda	

## JPN ROKU GIN OR HAKU VODKA

---

ABV. 43%

The first gin from Japan's legendary Suntory - Roku Gin, Japanese Vodka Haku

45ml

<b>Lime Rock</b>	13
w/ fresh lime	
<b>Lime Soda</b>	13
w/ soda water, fresh lemon juice, sugar	
<b>Lime Tonic</b>	13
w/ tonic water, fresh lime	
<b>Sakura &amp; Lime (Tonic or Soda)</b>	14
w/ salted sakura flower (cherry blossom), mint, tonic / soda	

## SIGNATURE COCKTAIL

---

<b>Momo Miwaku no Sangria</b>	18
miwaku no momo-shu (peach), pinot noir wine, tequila, brandy, lemon, lime, natural sugar, soda	
<b>Hakata Mule</b>	18
sho-chu, umeshu, freshly squeezed grapefruit, apple, lemon, soda Refreshingly fragrant, light soft touch on your palate.	
<b>Yuzu Classic</b>	17
yuzu-shu, vodka, sparkling wine, 100% yuzu & peel juice, apple, lime Citrusy & refreshing.	
<b>Yuzu Citrus Mojito</b>	18
yuzu-shu, bacardi rum, 100% yuzu & peel juice, lemon, lime mint, natural sugar, soda	
<b>Yuzu Aperol. jp</b>	18
yuzu-shu, aperol, prosecco, soda	
<b>Negroni. jp</b>	18
campari, jpn roku gin, dry vermouth	



# WINE LIST



## GLASS OF SPARKLING WINE

---

			<u>glass 150ml</u>	<u>bottle</u>
2018	Freeman Prosecco	Hiltop, NSW	14	50

## GLASS OF WHITE WINE

---

			<u>glass 150ml</u>	<u>bottle</u>
2019	Good Catholic Girl Teresa Riesling	Clare Valley, SA	15	65
2019	Auntsfield Estate Sauvignon Blanc	Marlborough, NZ	14	60
2018	Lethbridge Pinot Gris	Geelong, VIC	15	65

## GLASS OF ROSE WINE

---

			<u>glass 150ml</u>	<u>bottle</u>
2018	Domaine de Cala Classic Rosé	Trovence, FRA	15	65

## GLASS OF RED WINE

---

			<u>glass 150ml</u>	<u>bottle</u>
2019	Rochford Wines Pinot Noir	Yarra Valley, VIC	16	70
2017	Woodvale Spring Garden Shiraz	Clare Valley, SA	14	60
2016	Woodlands Cabernet Merlot	Margaret River, WA	13	50

## CHAMPAGNE AND SPARKLING WINE

---

			<u>bottle</u>
2018	Freeman Prosecco	Hiltop, NSW	50
2017	Col Vetoraz Prosecco Superiore Brut, Valdobbiadene D.O.C.G.	Veneto, ITALY	78
N/V	Piper-Heidsieck Brut Rose Champagne	Reims, FRA	169

# WHITE WINE

---

AROMATIC			<u>bottle</u>
2019	Good Catholic Girl Teresa Riesling	Clare Valley, SA	65
2019	Helm Half Dry Riesling	Canberra Dist, ACT	75
2017	Pegasus Bay Reserve Wines Bel Canto Dry Riesling	North Canterbury, NZ	105
2018	Grosset Polish Hill Riesling	Polish Hill, SA	149
CRISP & FRUITY			
2019	Auntsfield Estate Sauvignon Blanc	Marlborough, NZ	60
2018	Lethbridge Pinot Gris	Geelong, VIC	65
2018	Greywacke Sauvignon Blanc	Marlborough, NZ	78
2016	Auntsfield Estate South Oaks Sauvignon Blanc Single Block	Marlborough, NZ	96
RICH & FULL			
2017	Leeuwin Estate Prelude Vineyards Chardonnay	Margaret River, WA	78
2018	De Iuliis Limited Release Chardonnay	Hunter Valley, NSW	89
2018	Milton Reserve Chardonnay	TAS	90
2017	Domaine Christian Moreau Chablis	Burgundy, FRA	168
2015	Bernard Moreau Bourgogne Blanc	Burgundy, FRA	145

## ROSE WINE

---

			<u>bottle</u>
2018	Fermoy Estate Rose	Margaret River, WA	70
2018	Jules Rose	Languedoc, FRA	55
2018	Domaine de Cala Classic Rosé	Trovence, FRA	65

## RED WINE

---

			<u>bottle</u>
2017	Rochford Wines Pinot Noir	Yarra Valley, VIC	70
2017	Auntsfield Estate Pinot Noir Single Vineyard	Marlborough, NZ	80
2017	Seresin Leah Pinot Noir	Marlborough, NZ	90
2015	Pegasus Bay	Waipara, NZ	198
2017	Domaine Collotte Chambolle Musigny Vielle Vignes	Burgundy, FRA	268

SAVOURY			bottle
2016	Steinborner Barossa Shiraz	Barossa, SA	55
2017	Woodvale Spring Garden Shiraz	Clare Valley, SA	60
2017	Best's Wines LSV Shiraz	Great Western, VIC	78
2013	Zerella Etrurian Sangiovese	McLaren Vale, SA	90
2016	Good Catholic Girl James Brazill Shiraz	Clare Valley, SA	109
2012	Lloyd Brothers White Chalk Shiraz	McLaren Vale, SA	169
2018	The Standish The Relic Shiraz Viognier	Barossa, SA	278
2016	Rockford Basket Shiraz	Barossa, SA	349
BIG & SPICY			
2017	D'Soumah Cabernet	Yarra Valley, VIC	45
2016	Woodlands Cabernet Merlot	Margaret River, WA	50
2016	Elderton Estate Family Vineyards Cabernet Sauvignon	Barossa, SA	70
2016	Katnook Estate Cabernet Sauvignon	Coonawarra, SA	90
2018	Moss Wood Cabernet Sauvignon	Margaret River, WA	279

## GORYON-SAN MOCKTAIL

---

### Yuzu Matcha Lemonade 12

A super combo of matcha green tea and Japanese yuzu citrus topped up with lemonade.

### Matcha Mojito Zero Alcohol 13

non alcohol matcha mojito.  
A lot of fresh lime, lemon & mint make you feel green!

### Lemon Lime Ginger Lover 12

ginger beer mixed with fresh lemon & lime

### Mango & Passion Fruits Fresh Juice 13

fresh mango & passion fruits

### Grapefruits & Passion Fruits Fresh Juice 13

freshly squeezed grapefruits & passion fruits

## SOFT DRINK

---

### Coke 6

### Coke (no sugar) 6

### Lemonade 6

### Ginger Beer 7

### Iced Oolong Tea 6

### Iced Green Tea 6

### S.Pellegrino Sparkling Water 7

bottle / 500ml

### Acqua Panna Still Water 6

bottle / 500ml

## HOT TEA IN A POT



FREE REFILL

---

### Green Tea 8

### Hoji-Cha roasted green tea 8

### Genmai-Cha 8

### Peach Oolong Tea 9

### Strawberry Hoji-Cha 9

## YUZU & CITRUS

---

### Yuzu "Classic" 10

100% yuzu & peel juice, natural sugar, mineral water

### Yuzu "Soda" 10

100% yuzu & peel juice, natural sugar, soda

### Yuzu "Sakura" 12

100% yuzu & peel juice, salted sakura flower, natural sugar, soda

### Lemon & Lime "Bitters" 12

freshly squeezed lemon, lime, natural sugar, bitters, soda

## CALPICO ORIGINAL



### Calpico Water 8

### Calpico Soda 8

### Yuzu Calpico 12

100% yuzu & peel juice, calpico, natural sugar syrup, soda

### Mango Calpico 12

freshly squeezed mango, calpico

### Grapefruit Calpico 12

freshly squeezed grapefruit, calpico